

Table 1. Average number of events attended in previous year, by gender of respondent

<i>SEX S7-RESPONDENT SEX</i>		<i>Chicago</i>	<i>Philadelphia</i>	<i>San Francisco</i>	<i>Atlanta</i>	<i>Total</i>
1 1 MALE	Mean	2.9392	2.7415	5.0390	2.8920	3.5162
	N	258	143	223	127	751
2 2 FEMALE	Mean	3.4911	3.2953	5.3975	2.5093	3.7587
	N	293	170	220	163	845
Total	Mean	3.2324	3.0419	5.2171	2.6769	3.6446
	N	551	313	443	290	1596

Table 2. Average number of events attended in previous year, by ethnicity of respondent

EXBNFRQ2 Events attended during year

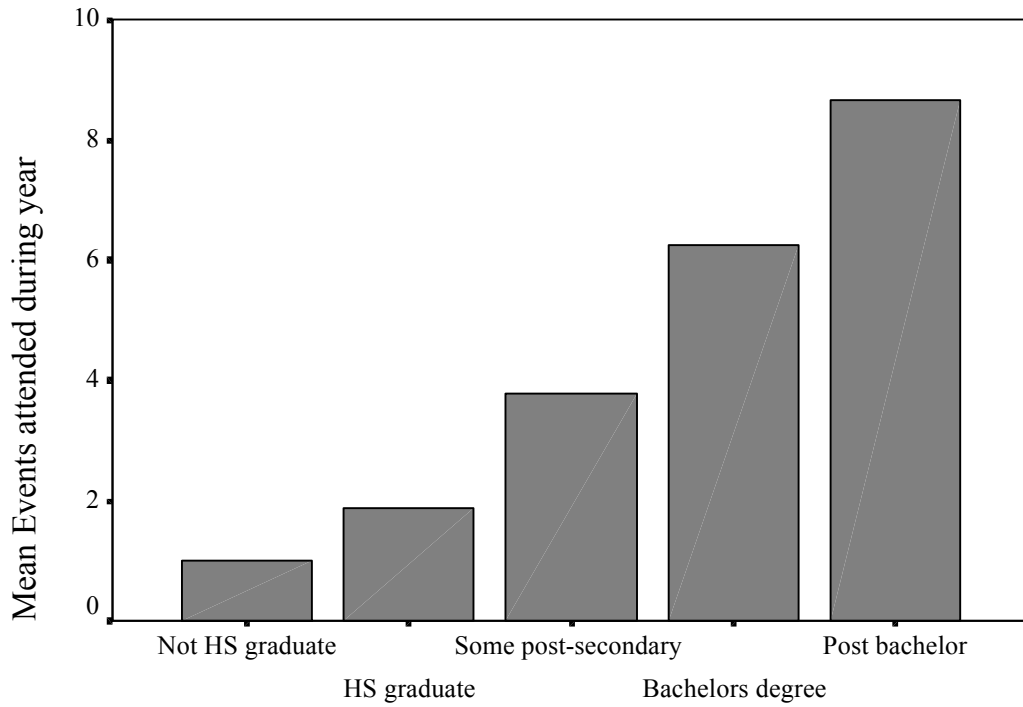
<i>RACE H2- RACE/ETHNICITY</i>		<i>Chicago</i>	<i>Philadelphia</i>	<i>San Francisco</i>	<i>Atlanta</i>	<i>Total</i>
1.00 1 HISPANIC	Mean	2.5595	1.4061	2.7630		2.5982
	N	54	10	84		147
2.00 2 WHITE, BUT NOT OF HISPANIC ORIGIN	Mean	3.6579	3.1481	6.7235	2.7674	4.0786
	N	372	216	243	218	1050
3.00 3 BLACK, BUT NOT OF HISPANIC ORIGIN	Mean	2.1481	2.5247	3.1652	2.6108	2.5077
	N	83	71	34	64	251
4.00 4 AMERICAN INDIAN OR ALASKAN NATIVE	Mean	.9357	.1622	3.7862		1.8277
	N	4	4	5		12
5.00 5 ASIAN OR PACIFIC ISLANDER	Mean	1.9488	3.3207	3.7951	.0000	3.1846
	N	24	5	59	2	90
Total	Mean	3.2209	2.9140	5.2198	2.7089	3.6139
	N	536	305	424	284	1550

Source: 1997 Survey of Public Participation in the Arts, 1999 IRS master file of exempt organizations, 1990 U.S. Census, STF3, zip code file

Table 3. Average number of events attended in previous year, by educational attainment of respondent

EXBNFRQ2 Events attended during year			<i>Chicago</i>	<i>Philadelphia</i>	<i>San Francisco</i>	<i>Atlanta</i>	<i>Total</i>
<i>GRADE H9-HIGHEST GRADE/YEAR OF SCHOOL</i>							
1.00	1 7TH GRADE OR LESS	Mean	.4289	.0000	.5787	.0000	.3555
		N	22	10	24	9	66
2.00	2 8TH GRADE	Mean	.0000	5.0000	.6985	.0000	.4051
		N	7	2	5	24	39
3.00	3 9TH TO 11TH GRADE	Mean	1.0980	1.8228	.3523	.6478	1.0013
		N	55	29	18	49	151
4.00	4 12TH GRADE BUT NO DIPLOMA	Mean	3.2689	.5095	5.4225	.0000	2.9604
		N	9	7	12	5	33
5.00	5 HIGH SCHOOL DIPLOMA/EQUIVALENT	Mean	1.7921	1.2604	3.3269	.8681	1.8572
		N	147	109	103	78	436
6.00	6 VOC/TECH PROGRAM AFTER HIGH SCHOOL	Mean	2.2965	4.7320	1.1301	.0000	2.0305
		N	11	14	9	16	50
7.00	7 SOME COLLEGE BUT NO DEGREE	Mean	3.0769	4.6811	4.8139	.7959	3.6024
		N	105	39	85	32	261
8.00	8 ASSOCIATE'S DEGREE	Mean	2.4646	2.5417	5.7985	15.4759	4.3135
		N	39	15	36	4	94
9.00	9 BACHELOR'S DEGREE	Mean	5.3282	4.4387	7.9548	7.5626	6.2579
		N	109	47	81	38	276
10.00	10 GRADUATE OR PROFESSIONAL SCH BUT NO D	Mean	5.8434	7.8180	7.8134	5.3239	7.1825
		N	7	12	21	6	45
11.00	11 MASTER'S DEGREE	Mean	8.4294	7.5054	10.6555	12.0580	9.6383
		N	29	16	27	18	91
12.00	12 DOCTORATE (PHD,EDD)	Mean	6.8198	2.0000	8.3201	6.0000	7.1031
		N	3	2	9	1	15
13.00	13 PROFESSIONAL(MEDICINE/M D;DENTISTRY/DD	Mean	12.4969	4.5709	10.4653		8.7287
		N	5	6	4		16
Total		Mean	3.2148	3.0727	5.2305	2.6010	3.6358
		N	548	309	436	281	1573

Figure 1. Events attended during previous year, by educational attainment of respondent, selected metropolitan areas



Educational attainment

Cases weighted by INTWAIT

Table 4. Average number of events attended in previous year, by family income of respondent

EXBNFRQ2 Events attended during year				<i>Chicago</i>	<i>Philadelphia</i>	<i>San Francisco</i>	<i>Atlanta</i>	<i>Total</i>
<i>INCOME H26-HH</i>								
<i>INCOME-SPECIFIC</i>								
<i>CATEGORY</i>								
1.00	1	\$10,000 OR LESS	Mean	.5744	3.1673	1.5005	.5529	1.2803
			N	20	18	18	34	90
2.00	2	\$10,001 TO \$20,000	Mean	2.8192	2.2862	4.9732	1.2418	2.8203
			N	28	28	34	36	127
3.00	3	\$20,001 TO \$30,000	Mean	3.3533	1.6658	2.5550	3.2969	2.7342
			N	36	25	40	21	121
4.00	4	\$30,001 TO \$40,000	Mean	2.3420	2.7844	3.7396	1.3535	2.5430
			N	70	31	62	57	220
5.00	5	\$40,001 TO \$50,000	Mean	3.1264	.9860	3.6670	.6834	2.3740
			N	61	32	32	25	149
6.00	6	\$50,001 TO \$75,000	Mean	3.1804	4.5182	5.3730	6.0541	4.4671
			N	116	56	79	47	297
7.00	7	\$75,001 TO \$100,000	Mean	4.8484	2.2425	8.5527	4.3416	5.7104
			N	53	16	45	19	133
8.00	8	OVER \$100,000	Mean	5.6094	4.9533	7.4725	2.5883	5.9842
			N	45	27	68	17	157
Total			Mean	3.3684	3.0105	5.2045	2.4903	3.6652
			N	428	235	377	255	1294

Table 5. Average number of events attended in previous year, by age of respondent

EXBNFRQ2 Events attended during year						
<i>AGE2 Age</i>		<i>Chicago</i>	<i>Philadelphia</i>	<i>San Francisco</i>	<i>Atlanta</i>	<i>Total</i>
1.00 Under 30	Mean	3.2638	2.3553	5.2031	4.4107	3.8345
	N	129	62	102	46	340
2.00 30-44	Mean	3.0038	2.5726	5.3444	3.4231	3.6268
	N	193	106	149	115	563
3.00 45-59	Mean	4.1953	4.8806	6.1435	1.3106	4.2412
	N	112	65	105	80	362
4.00 Over 60	Mean	2.7651	2.9612	3.5889	1.5513	2.8263
	N	105	70	78	49	302
Total	Mean	3.2667	3.1130	5.1891	2.6769	3.6595
	N	540	304	433	290	1567

Table 6. Regression analysis, individual variables

Coefficients						
	<i>Unstandardized Coefficients</i>		<i>Standardized Coefficients</i>		<i>t</i>	<i>Sig.</i>
	<i>B</i>	<i>Std. Error</i>	<i>Beta</i>			
(Constant)	-.023	.052			-.437	.662
AGE2 Age	.006	.013	.012		.470	.638
FEMALE Gender	.012	.026	.013		.489	.625
BLACK	.026	.037	.019		.712	.476
GRADE H9-HIGHEST GRADE/YEAR OF SCHOOL	.058	.005	.312		10.610	.000
INCOME H26-HH INCOME-SPECIFIC CATEGORY	.041	.007	.172		5.684	.000

a Dependent Variable: EXBENCH2 Attended event last year

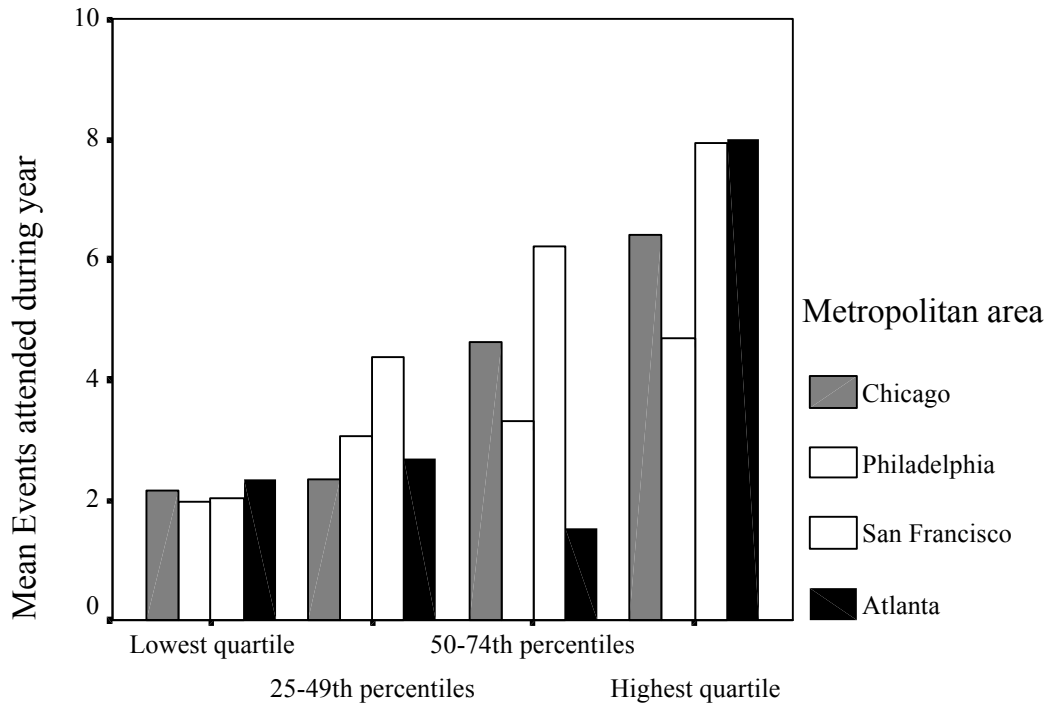
Adjusted R-square: .173

Table 7. Number of cultural events attended last year, by number of cultural providers per capita, selected metropolitan areas

Report
EXBNFRQ2 Events attended during year

<i>Cultural providers per capita (quartiles)</i>		<i>Chicago</i>	<i>Philadelphia</i>	<i>San Francisco</i>	<i>Atlanta</i>	<i>Total</i>
1 Lowest quartile	Mean	2.1644	1.9562	2.0174	2.3583	2.1418
	N	171	65	89	89	414
2 25-49th percentiles	Mean	2.3558	3.0498	4.3830	2.6876	3.2224
	N	111	96	114	36	357
3 50-74th percentiles	Mean	4.6328	3.3054	6.2283	1.5258	4.5332
	N	103	70	105	34	312
4 Highest quartile	Mean	6.4033	4.6823	7.9314	7.9923	6.8688
	N	73	45	112	12	242
Total	Mean	3.4421	3.1242	5.2873	2.6624	3.8600
	N	458	276	420	171	1326

Figure 2. Number of cultural events attended last year, by number of cultural providers per capita, selected metropolitan areas



Arts organizations per capita (quartiles)

Cases weighted by INTWAIT

Table 8. Number of cultural events attended in previous year, by per capita income of respondent's zip code (quartiles), selected metropolitan areas

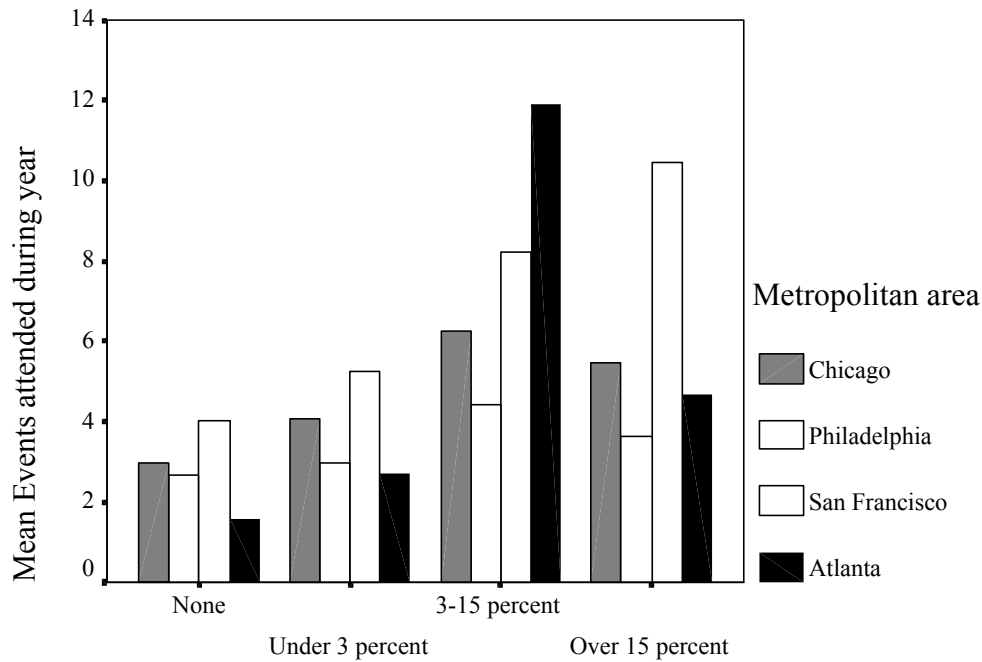
Report
EXBNFRQ2 Events attended during year

<i>NPCI Per capita income</i>		<i>Chicago</i>	<i>Philadelphia</i>	<i>San Francisco</i>	<i>Atlanta</i>	<i>Total</i>
1 Lowest quartile	Mean	3.1280	2.4172	3.3630	3.3115	3.0233
	N	135	82	64	48	330
2 25-49th percentiles	Mean	1.9910	2.6128	3.8012	.5586	2.5829
	N	113	85	102	30	330
3 50-74th percentiles	Mean	2.7929	3.0210	4.9533	3.1380	3.6380
	N	112	50	116	55	333
4 Highest quartile	Mean	6.2959	4.9275	7.6184	2.9322	6.2245
	N	98	59	136	37	330
Total	Mean	3.4390	3.1242	5.2969	2.6928	3.8662
	N	459	276	419	169	1323

Table 9. Events attended in previous year, by proportion of respondent's zip code population living in ethnically and economically diverse block groups, selected metropolitan areas

<i>Percent of population in diverse block groups</i>		<i>Chicago</i>	<i>Philadelphia</i>	<i>San Francisco</i>	<i>Atlanta</i>	<i>Total</i>
.00 None	Mean	2.9686	2.6890	4.0323	1.5948	3.0421
	N	347	162	270	127	907
1.00 Under 3 percent	Mean	4.0516	2.9953	5.2325	2.7114	3.9841
	N	63	45	58	26	192
2.00 3-15 percent	Mean	6.2518	4.4380	8.2074	11.8890	6.9395
	N	27	51	71	12	161
3.00 Over 15 percent	Mean	5.4486	3.6330	10.4654	4.6899	6.5765
	N	23	18	25	10	76
Total	Mean	3.4369	3.1242	5.2707	2.6127	3.8467
	N	461	276	424	174	1335

Figure 3. Events attended in previous year, by proportion of respondent's zip code population living in ethnically and economically diverse block groups, selected metropolitan areas



Economic and ethnic diversity

Cases weighted by INTWAIT

Table 10. Events attended in previous year, by proportion of respondent's zip code population living in economically diverse block groups

Report						
EXBNFRQ2 Events attended during year						
<i>Percent living in economically diverse block groups</i>		<i>Chicago</i>	<i>Philadelphia</i>	<i>San Francisco</i>	<i>Atlanta</i>	<i>Total</i>
.00 None	Mean	3.1263	3.1235	4.2198	1.6927	3.2422
	N	260	106	224	114	703
1.00 Under 3 percent	Mean	2.5807	2.5914	4.5512	.6251	3.0513
	N	80	50	80	24	235
2.00 3-15 percent	Mean	4.4233	2.8410	6.6304	8.9080	5.1029
	N	78	66	77	22	243
3.00 Over 15 percent	Mean	5.1312	3.9545	9.6487	3.5230	5.8311
	N	43	55	43	14	154
Total	Mean	3.4369	3.1242	5.2707	2.6127	3.8467
	N	461	276	424	174	1335

Table 11. Events attended in previous year, by proportion of respondent's zip code population living in ethnically diverse block groups

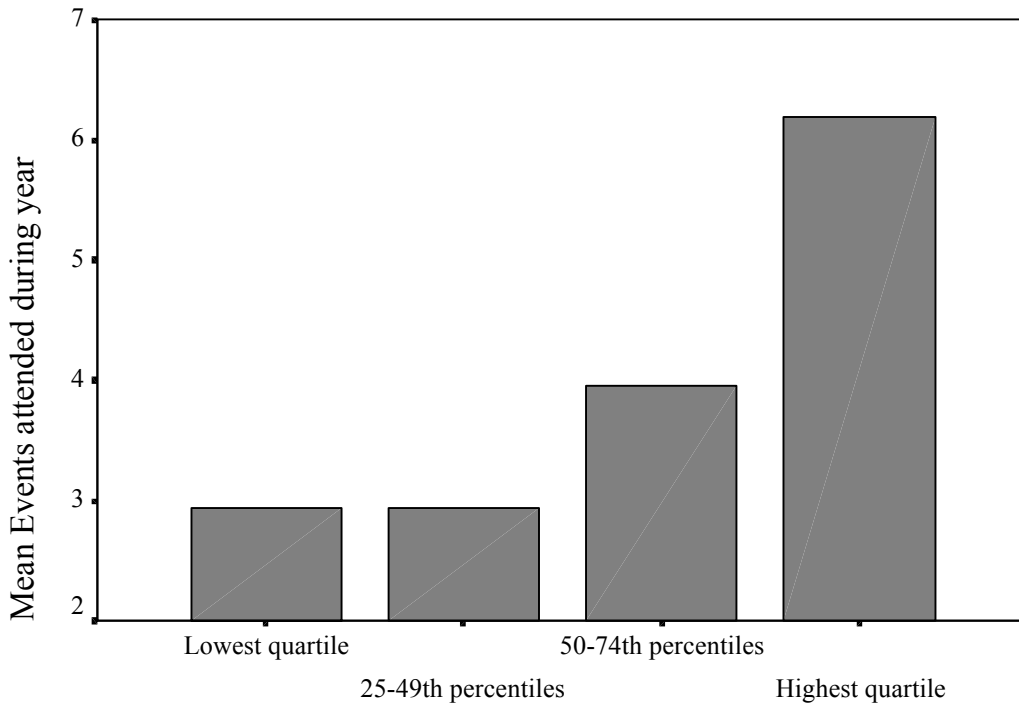
Report						
EXBNFRQ2 Events attended during year						
<i>Percent living in ethnically diverse block groups</i>		<i>Chicago</i>	<i>Philadelphia</i>	<i>San Francisco</i>	<i>Atlanta</i>	<i>Total</i>
.00 None	Mean	3.4010	2.6837	6.0389	.5008	3.3739
	N	78	64	30	13	184
1.00 Under 3 percent	Mean	2.8051	2.3967	6.5016	1.7993	3.1600
	N	68	52	34	36	189
2.00 3-15 percent	Mean	2.4987	3.2720	3.4806	3.2788	2.9285
	N	137	77	42	25	282
3.00 Over 15 percent	Mean	4.4085	3.7814	5.3265	3.1090	4.5759
	N	178	83	317	97	675
Total	Mean	3.4345	3.1242	5.2859	2.6624	3.8590
	N	460	276	423	171	1330

Table 12. Events attended during previous year, by percent of respondent's zip code population living in non-family households

Report
EXBNFRQ2 Events attended during year

<i>NPCTNFHH Percent of non-family households (quartiles)</i>		<i>Chicago</i>	<i>Philadelphia</i>	<i>San Francisco</i>	<i>Atlanta</i>	<i>Total</i>
1 Lowest quartile	Mean	2.8255	3.0245	3.1955	2.8292	2.9389
	N	199	60	93	59	411
2 25-49th percentiles	Mean	2.9582	3.1546	3.1131	2.2082	2.9395
	N	89	57	108	45	299
3 50-74th percentiles	Mean	3.9133	2.9997	5.5096	2.0818	3.9529
	N	103	119	100	21	343
4 Highest quartile	Mean	5.1345	3.5893	8.8034	3.2887	6.1888
	N	68	41	117	44	271
Total	Mean	3.4390	3.1242	5.2969	2.6928	3.8662
	N	459	276	419	169	1323

Figure 4. Events attended during previous year, by percent of respondent's zip code population living in non-family households



Percent of non-family households (quartiles)

Cases weighted by INTWAIT

Table 13. Factor loading for neighborhood socio-economic status factor and neighborhood diversity factor

Rotated Component Matrix		
	<i>Socio-economic status</i>	<i>Neighborhood diversity</i>
Percent of adults without bachelors degree	-.928	-.012
Percent of workers in managerial and professional occupations	.936	.009
Percent of housing units with renters	-.025	.742
Average gross housing value	.794	-.105
Per capita income	.922	-.205
Non-family household percentage	.393	.836
Average household size	-.512	-.580
Percent of population under 20	-.712	-.451
Percent of population Asian	.147	.016
Percent of population living in economically diverse block groups	-.096	.837
Percent of population living in economic and ethnically diverse block groups	.042	.799
Percent of population living in ethnically diverse block groups	-.104	.215
Cultural providers per capita	.438	.381
Percent of housing built before 1940	-.167	.664

Extraction Method: Principal Component Analysis. Rotation Method: Varimax with Kaiser Normalization.

a Rotation converged in 6 iterations.

Table 14. Events attended in previous year, by neighborhood socio-economic status

Report

EXBNFRQ2 Events attended during year

<i>NRICHFC1</i> <i>Neighborhood SES</i> <i>factor (quartiles)</i>		<i>Chicago</i>	<i>Philadelphia</i>	<i>San Francisco</i>	<i>Atlanta</i>	<i>Total</i>
1 Lowest quartile	Mean	2.4215	2.0103	2.5804	3.2059	2.4610
	N	182	93	82	53	411
2 25-49th percentiles	Mean	2.2758	2.9770	3.5854	1.7915	2.7345
	N	123	86	102	54	366
3 50-74th percentiles	Mean	5.4171	4.1272	4.9345	2.0314	4.5554
	N	81	62	116	35	294
4 Highest quartile	Mean	5.8190	4.7094	9.0055	5.4901	7.1751
	N	71	34	119	22	246
Total	Mean	3.4421	3.1242	5.2969	2.7894	3.8847
	N	458	276	419	163	1317

Table 15. Events attended in previous year, by neighborhood diversity factor

Report

EXBNFRQ2 Events attended during year

<i>Neighborhood diversity factor (quartiles)</i>		<i>Chicago</i>	<i>Philadelphia</i>	<i>San Francisco</i>	<i>Atlanta</i>	<i>Total</i>
1 Lowest quartile	Mean	3.5203	3.9747	3.6977	1.9854	3.3984
	N	125	23	137	49	334
2 25-49th percentiles	Mean	2.3311	3.3938	3.1768	1.4949	2.7574
	N	101	84	109	44	338
3 50-74th percentiles	Mean	2.6467	2.0125	6.6042	3.6168	3.8235
	N	126	67	100	52	345
4 Highest quartile	Mean	5.3403	3.4334	9.6324	5.8249	5.7700
	N	107	102	73	18	300
Total	Mean	3.4421	3.1242	5.2969	2.7894	3.8847
	N	458	276	419	163	1317

Table 16. Regression analysis, individual and neighborhood effects

	<i>Individual effects only</i>	<i>Neighborhood effects only</i>	<i>Individual and neighborhood effects</i>
R-square	0.085	0.078	0.129
Adjusted r-square	0.085	0.077	0.127
F	147	62	71
<i>Individual effects</i>			
Educational attainment	0.292		0.239
<i>Neighborhood effects</i>			
SES /cultural provider factor		0.228	0.148
Diversity/cultural provider factor		0.165	0.168