

MASTER OF SOCIAL WORK (MSW)/ CERTIFICATE IN JEWISH COMMUNAL SERVICE

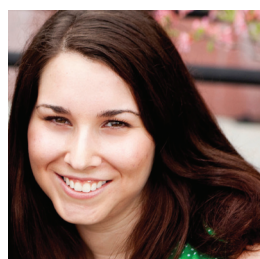


Lisa (Bieber) David, MSW/CJCS 2001

“The rigorous coursework and the experiential learning I experienced in my field placement allowed me to develop skills as both a social worker and a professional in the Jewish community. I credit my Penn-Gratz experience with giving me the knowledge, confidence, practical experience, and community contacts to be successful in my field. In my current role, as the Associate Director of Camping for the Union for Reform Judaism, I help oversee the 13 residential Jewish camps of the Reform Movement, managing the program “portfolio” of these camps and overseeing system-wide initiatives related to education, staffing, special needs camping, professional development and more.”

Rachel (Levine) Steinberg, MSW/MAJCS 2001

“I knew that I wanted to continue my work in the Jewish community after graduation, and the dual degree program provided me with important insights, new perspectives, and practical skills. It challenged me to think about my work in a broader context and helped me to understand and appreciate the value in building and strengthening community. It also provided me with the opportunity to learn from and with an impressive group of faculty and students.”



Amy (Wagner) Weinstein, MSW 2009/CJCS 2010

“This joint program allowed me to complete my studies to become a social worker, with a unique Jewish twist that helped prepare me for my career as a Jewish Federation professional. I currently work at the United Jewish Federation of Tidewater in Virginia Beach, VA as the Director of the Young Adult Division. I feel very lucky to have attended Gratz College in conjunction with the University of Pennsylvania for my graduate studies.”

Partial list of our graduates' post-MSW/CJCS employment:

- Pinemere Camp, Philadelphia, PA
- Bernard and Ruth Siegel Jewish Community Center, Wilmington, DE
- Jewish Federation of Greater Philadelphia, Philadelphia, PA
- Jewish Federation of Rhode Island, Providence, Rhode Island
- Hillel of San Diego, San Diego, CA
- Betty and Milton Katz Jewish Community Center, Cherry Hill, NJ
- JCC Camps at Medford, Medford, NJ
- Maccabi USA, Philadelphia, PA
- United Jewish Federation of Tidewater, Virginia Beach, VA
- Jewish Family and Children's Service of Greater Philadelphia
- Union for Reform Judaism (URJ) Camps, New York, NY
- Jewish Community High School, Gratz College

PROGRAM OVERVIEW:

The Masters in Social Work (MSW)/Certificate in Jewish Communal Service is a unique program designed to prepare students for careers in Jewish communal service. The MSW program builds on a liberal arts foundation and is designed to prepare social workers for leadership roles in developing and providing services to individuals, families, groups, communities and organizations. Penn's MSW program is fully accredited by the Council on Social Work Education.

Students accepted to Penn's MSW program have the opportunity to earn the credentials of Master of Social Work together with an 18 credit Certificate of Jewish Communal Service. The MSW/Certificate program may be completed in two years and one summer.

- The Certificate program at Gratz College consists of six courses, two of which are electives in the School of Social Policy & Practice. They include: Sociology of the American Jewish Community, The Jewish Family, Executive/ Non-Profit Management Skills, and Jewish Political Studies.
- The University of Pennsylvania School of Social Policy & Practice offers a wide range of field placements to prepare students in the best possible way for their chosen careers. Examples of Jewish communal placements include: Jewish Federations, Hillels, Jewish Family and Children's Service, Jewish geriatric centers, and Jewish community centers. Students are in classes two days a week at University of Pennsylvania and in field placement three days a week. Gratz College courses may be taken both online and on campus.
- The coordination between faculty and staff at both schools enables students to benefit from advisement and networking by professionals in Social Work and Jewish Communal Service.

ADMISSION REQUIREMENTS:

Applicants apply to both the Penn School of Social Policy & Practice's MSW program and Gratz College. Applicants for admission must hold:

- a bachelors degree in liberal arts from an accredited college or university plus paid or voluntary experience in the field; or
- a bachelors degree in social work from an accredited undergraduate social work program; and
- an undergraduate record demonstrating academic achievement.
- GRE scores are not required

APPLICATION DEADLINE:

Applications at both schools are accepted on a rolling basis. Preference for admission and financial aid will be given to applicants who apply by April 15th.

TO APPLY

University of Pennsylvania, School of Social Policy & Practice: Visit our website at www.sp2.upenn.edu/programs/apply.html or contact Mary Mazzola, Associate Dean, Enrollment Management at 215-898-5550.

Gratz College: Visit our website at www.gratz.edu/page7865.aspx or call the Office of Enrollment Management at 215-635-7300 x140 for further details.

*Who are our students
& alumni?*

**WHO DO
YOU HOPE
TO BE?**

Who are you?